



Multiple Application Platform Server

MAPS 6.10 Release Guide

Product version 6.10

Last updated 3/23/2023

Trademark, Publishing Statement, and Copyright Notice

© 1998-2023 Evisions. All rights reserved.

This software and related documentation are provided under a license agreement containing restrictions on use and disclosure and are protected by intellectual property laws. No part of this document may be reproduced, stored in or introduced into a retrieval system, or transmitted in any form or by any means (electronic, mechanical, photocopying, recording, or otherwise), or for any purpose, without the express written permission of Evisions.

The information contained herein is subject to change without notice and is not warranted to be error-free. Product features referenced herein for a period of time may not match product contents. Evisions does not warrant that the functions contained in the software will meet your requirements or that the operation of the software will be uninterrupted or error free. Evisions reserves the right to make changes and/or improvements in the software without notice at any time.

This software and documentation may provide access to or information on content, products, and services from third parties. Evisions and its affiliates are not responsible for and expressly disclaim all warranties of any kind with respect to third-party content, products, and services. Evisions and its affiliates will not be responsible for any loss, costs, or damages incurred due to your access to or use of third-party content, products, or services. Evisions does not endorse the content or developer of any products or web sites mentioned.

All information in this guide is designed for instructional purposes only. Evisions makes no guarantees regarding the accuracy or performance of any techniques used in this guide. Software configurations and environments may vary, and some techniques used in this guide may not operate efficiently under all configurations. This guide may contain examples of various technologies or products, which are the sole property and responsibility of their creators.

Trademarks are the property of the respective owners for any products mentioned herein.

Table of Contents

What's New in MAPS 6.10?	4
MAPS Updates	4
Product versions	4
Installation	4
1. Prepare test environment and ensure current backup	4
2. Check for updates	4
3. Allow update process to complete	5
4. Verify the latest version is installed	5
HTTP/HTTPS File Server - Advanced	6
OpenSSL Version	6
Minimum and Maximum SSL Version	7
OpenSSL cipher list (TLS 1.2 and below)	7
OpenSSL cipher suites (TLS 1.3)	7
MAPS 6.10 Release Notes	8
Getting Help	9
Can't find what you're looking for?	9

What's New in MAPS 6.10?

Evisions is pleased to announce the release of MAPS version 6.10, which includes the following changes:

- OpenSSL version can now be configured.
- Updated incremental searching capabilities.
- Improved the way changes made to IP Restrictions propagate to other clustered nodes.
- Additional enhancements and resolved issues.

We appreciate the feedback received from all of our users. Our products would not be what they are today without your continued support. If you have any comments or suggestions, please do not hesitate to [open a case with the HelpDesk](#) and let us know.

MAPS Updates

MAPS 6.10 is an update to the MAPS service and MAPS Config. You should upgrade both components concurrently.

Product versions

The latest versions of MAPS included in this release are:

- MAPS service 6.10.0.2636 / MAPS Config 6.10.0.1477 / MapsDBConfig 2.1.0.107

Installation

1. Prepare test environment and ensure current backup

We highly recommend installing updates in a test environment before applying them to your production environment. You should make sure that a current backup is available in case of any unforeseen issues. To create a full backup of your MAPS environment, go to the **Server -> Backups** screen in MAPS and click **Backup Now**.

2. Check for updates

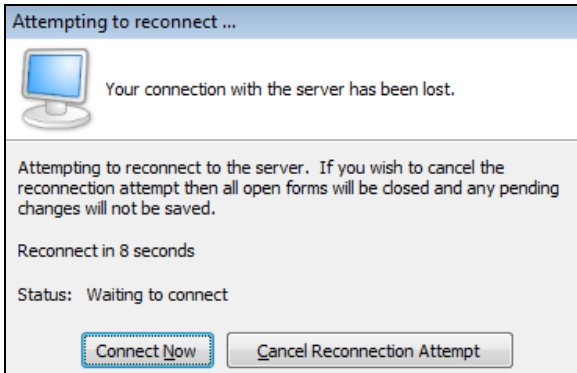
Click the **Check for Updates** button in MAPS Config to view available updates.

If you need to apply updates prior to the 6.10 update, please refer to the appropriate [release guide\(s\)](#) before proceeding.

It is possible to apply updates when users are on the system; however, to avoid the possibility of losing unsaved work we recommend applying updates during off hours.

[3. Allow update process to complete](#)

When applying updates to the MAPS service you will be temporarily disconnected from the server:



The update process may take a few minutes to complete. **Do NOT cancel the reconnection attempt or manually restart the server.** You will automatically be reconnected to the server once the update has been applied.

[4. Verify the latest version is installed](#)

To ensure that you are on the most current version, continue clicking the **Check for Updates** button and applying the updates until no new updates are available.

[Please Provide Us with Your Feedback!](#)

As always, we welcome any [feedback or suggestions](#) you may have. We very much appreciate your thoughts and suggestions, so please keep the great ideas coming!

HTTP/HTTPS File Server - Advanced

MAPS 6.10 includes several updates to the **HTTP File Server > Advanced Settings** screen in order to support OpenSSL version 1.1.1. These changes include the ability to select the **OpenSSL** version as well as the **Minimum** and **Maximum SSL** versions.

Navigation

- Applications
- Auditing & Data Wareh...
- Data Connections
- Data Dictionary
- Email
- FTP
- Groups
- Inspector
- LDAP
- License
- Logging
- Mapplets
- Printers
- Server
 - Backups
 - Diagnostics
 - File Operations
 - HTTP File Server
 - Advanced Settings
 - IP Restrictions
 - Launch Page
 - Messages
 - Nodes

Refresh

Allow pre-authentication (SSO)

Special Header

EPPN

Content Delivery Network (CDN) URL

https://evicdn.evisions.com/ Default

Web server timeout (in minutes)

15 Default

Changing SSL settings will cause the web server to restart. In clustered environments, this will affect all nodes.

OpenSSL Version

Default (1.1.1)

Minimum SSL Version

TLS 1.2

Maximum SSL Version

Default (TLS 1.3)

OpenSSL cipher list (TLS 1.2 and below) [\(more info\)](#)

AES:ALL:!aNULL:!eNULL:!LOW:+RC4:@STRENGTH Default

OpenSSL cipher suites (TLS 1.3) [\(more info\)](#)

TLS_AES_256_GCM_SHA384:TLS_CHACHA20_POLY1305_SHA256:TLS_AES_128_GCM_SHA256 Default

Debug Check for Updates Help Support Log Out

OpenSSL Version

The **OpenSSL Version** dropdown allows to specify the version of OpenSSL that will be used by the MAPS server. The default is version 1.1.1.

Note: When you change the OpenSSL version, SSL version, or ciphers (TLS version or cipher), the web server will restart.

Minimum and Maximum SSL Version

If your organization is required to support older browser versions, you may need to include obsolete SSL protocols. You can specify a minimum and maximum SSL / TLS version depending on the OpenSSL version you have selected. For OpenSSL 1.1.1, the minimum default SSL version is TLS 1, and the maximum default SSL version is 1.3. [List of SSL/TLS support by browser](#)

OpenSSL cipher list (TLS 1.2 and below)

The cipher list gives you complete control over the exact SSL ciphers that MAPS is allowed to use for TLS versions 1.2 and below. The cipher list contains one or more cipher strings in the format described in the [OpenSSL 1.0.1 documentation](#).

OpenSSL cipher suites (TLS 1.3)

TLS 1.3 allows you to specify the exact cipher suites that MAPS is allowed to use, prioritized from left to right. The cipher suites contain one or more ciphers in the format described in the [OpenSSL 1.1.1 Documentation](#).

Note: You should ensure there are no typos in the cipher value. Entering an empty cipher value will result in MAPS behaving as though you had entered the default cipher value. Entering an invalid cipher value may result in a failure to load the web server.

3rd-Party Security Checks

Some websites that provide software security checks may not issue a grade above a B+ due to the nature of some of the supported security ciphers. Specifically, RC4 ciphers are currently required to prevent [Browser Exploit Against SSL/TLS](#) (BEAST) attacks. It is therefore assumed that RC4 ciphers should be included in the OpenSSL cipher list. However, RC4 has its own security vulnerabilities that may lower the grade provided by security-checking software. If you choose to alter the default cipher list, you should be aware of the advantages and disadvantages provided by the ciphers you include.

MAPS 6.10 Release Notes

MAPS Service 6.10.0.2636 / MAPS Config 6.10.0.1477 / MapsDBConfig 2.1.0.107

MAPS

Enhancements

Area	Description	Issue number
Database	Updated the MAPS Database Configuration utility to support MAPS 6.10.	MAPS-3454
IP Restrictions	Changes made to an IP Restriction will now propagate to all other clustered nodes instantaneously.	MAPS-2100
Searching	Improved incremental searching capabilities for several areas of MAPS Config.	MAPS-3432
Security	Added version 1.1.1 to the list of existing OpenSSL files packaged with MAPS, and included the option to configure the OpenSSL version.	MAPS-1448

Resolved Issues

Area	Description	Issue Number
SSO	Certain SAML server configurations would cause authentication via Single Sign-On to fail with an Invalid Content-Length Header error message.	MAPS-3391

Getting Help

For information on using the software, please refer to the product Help, which contains detailed information on all aspects of the product.

If you are having problems with the installation or configuration, you can search our [support site](#), which includes a knowledge base of common issues. If you are unable to find the solution, submit a HelpDesk request with a detailed explanation of the problem you are experiencing.

Please do not hesitate to contact the Evisions HelpDesk if any questions or problems arise. We are here to help you and want to ensure your success.

Can't find what you're looking for?

We would love to make our documentation better! If you have a moment to let us know what we missed or how we can make the help more useful, please email us at TechDocs@evisions.com.